

FLATBED STRAW TRAILER

ROLLAND: the experience of a leading manufacturer

You have acquired a ROLLAND flatbed straw trailer. Thanks to its many years of experience, our company is able to produce equipment suited to the most extreme working conditions in the field of agriculture and industry.

ROLLAND SA offers a wide range of flatbed straw trailers to meet all requirements, with gross weight capacities ranging from 6 to 15 tons.

Offering elaborate design, they are fitted to accommodate all available options: 1, 2 or 3 axles, articulated draw-bar, hay extensions, side extensions, hydraulic parking skid etc.

Additionally, our flatbed straw trailers have been designed to optimise the efficiency of transportation and loading techniques. Safety being a major concern to us, in-depth research by our research and development department has led us to design modern and quality products.

WARNING

This instruction manual is specifically destined to ROLLAND equipment users. Its purpose is to explain the machine's operation in normal conditions of use, in which users can work safely.



1. GUARANTEE *P3*

2. INSTRUCTIONS FOR USE AND SAFETY *P4*

- 2-1 SAFETY INSTRUCTIONS
- 2-2 GENERAL COMPOSITION
- 2-3 STORAGE

3. START-UP AND SETTINGS *P6*

- 3-1 SETTING THE DRAW-BAR
- 3-2 HITCHING
- 3-3 CONNECTIONS TO ENERGY SUPPLIES

4. MAINTENANCE *P7*

- 4-1 WASHING THE FLATBED TRAILER
- 4-2 PERIODICAL CONTROLS
- 4-3 WHEELS AND TYRES

1. GUARANTEE

To obtain the full benefits of the manufacturer's guarantee, please make sure you follow the maintenance operations and recommendations for use described within this manual.

Terms of guarantee:

Our flatbed straw trailers are supplied with a parts and labour guarantee, valid for one year following the date of start-up.

Under no circumstance shall ROLLAND SA be held responsible for any incident due to a user not following safety, usage or maintenance instructions.

The guarantee covers all manufacturing faults and defects on new equipment.

The guarantee cannot be extended to parts or to any elements or optional equipment bearing the brand of a supplier (tyres, hydraulic elements, bearings, etc.).

➤ **The guarantee will be withdrawn, and we will refuse any responsibility:**

- If the machine has been modified using elements manufactured outside our workshops or our distributors' workshops.

- If the original serial number has been falsified.

- If the elements fitted in our workshops have been dismantled and replaced by elements of a different origin.

- If equipment failures due to any form of negligence, inappropriate use, overload (even temporary), to a user's inexperience or to lack of greasing.

Any repair performed while the equipment is under guarantee must only be carried out with Ets ROLLAND's consent, upon acceptance, by Ets ROLLAND, of an estimate by the repair technician.

2. INSTRUCTIONS FOR USE AND SAFETY

2-1 SAFETY INSTRUCTIONS

Before we deliver any instructions relative to starting the machine up, we believe it necessary to supply you with a few recommendations concerning the use of your flatbed straw trailer.

➤ Tractor and linkage:



- Make sure that the tractor you are using can bear the trailer's functional workload.
- After linking the trailer to the tractor, make sure the parking skid is raised to resting position and is correctly locked into place.

➤ Loading:

- Never exceed the vehicle's functional workload, as damage could occur.

Any damage due to overloading shall under no circumstance be covered by the manufacturer.

➤ Lighting:

- Before use, always make sure the lighting equipment is operational (indicators, lights, brake lights).
- When working at night or in foul weather, make sure that the hitching area is well lit-up.

➤ Safety:



- Always stop the engine and remove the key from the ignition before any intervention on the vehicle.
- Safety devices must never be put out of order or made inefficient.
- Never go beneath the vehicle when it is running.
- Carefully apply all maintenance instructions and periods defined in this manual. Regular maintenance will increase your vehicle's longevity.
- Before manoeuvring to change position, make sure no-one is standing behind the vehicle as well as in any other area with potential risk.
- Always place hydraulic hoses in resting position when the vehicle is unhitched from the tractor in order to avoid premature damage to the equipment.
- Don't overload the trailer at the level of the hay extensions.

➤ Repairs :



In the event of a failure or a malfunction, please call a qualified technician. In all cases, always replace missing or damaged components with ROLLAND spare parts.

2-2 GENERAL COMPOSITION

➤ Transport:

ROLLAND flatbed straw trailers are transportation vehicles designed to be hitched onto farming tractors. They must therefore comply with road traffic regulations.

- The general specifications are engraved on the official plate affixed to the front right-hand side of the vehicle:

 REBORQUES ROLLAND		BP 199 PENCRAH 29411 LANDERNEAU	
CONSTRUCTEUR : Ets ROLLAND			
TYPE	<input type="text"/>		
N° SERIE	<input type="text"/>		
P.T.C	<input type="text"/>		
ESSIEU 1	<input type="text"/>		
ESSIEU 2	<input type="text"/>		
P./ANNEAU	<input type="text"/>		
		Réceptionné à PENCRAH le	<input type="text"/>
		Année de fabrication	<input type="text"/>
			

2-3 STORAGE

We recommend that you store your machine under shelter:

On its parking skid or resting on a supporting block

- On flat ground, with brakes tightened (a slope not exceeding 10 degrees is acceptable)
- With connectors attached to the hose support.
- With various mechanical elements properly greased (trailer-lowering cylinder shaft)

3. START-UP AND SETTINGS

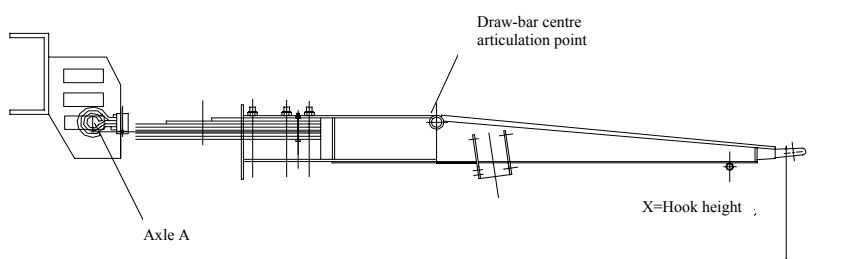
3-1 SETTING THE DRAW-BAR (non-articulated)

-To ensure that the trailer body is level according to the linkage height.
 -To ensure a more supple linkage and obtain a maximum load report to the tractor's rear axle (less than 3 tons on the linkage ring according to currently applicable legal provisions).

- Adjusting the draw-bar height.



Warning! Perform this setting on level ground with parking brake tightened.



-Using a jack placed to the front of the vehicle, gently raise the vehicle so that it leans backwards slightly.
 -Remove the draw-bar setting shaft A, and select the most appropriate setting hole so that the vehicle is horizontal once hitched onto the tractor; then, insert the shaft again, not forgetting to block it with the appropriate pin.

3-2 HITCHING

- The vehicle may only be hitched onto a farming tractor, whose speed does not exceed 25 kph.
- Linkage is ensured by means of a B-type ring, which is standardised according to the vehicle type; however, all types of linkage may be used (hooks, pins, brackets).
- Hitching procedure:

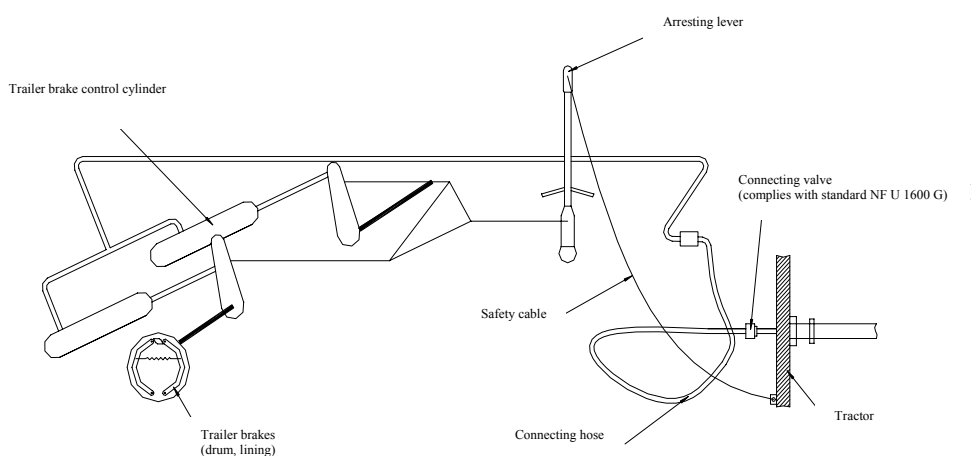
- Adjustable tractor linkage: Slowly back up towards the trailer with the linkage device lowered, and fit the hook into the ring. Once both elements are in place, raise the linkage system (the ring shall fit into position automatically) and lock the device into place. Raise the parking skid and retract it.

- Static tractor linkage: raise the parking skid to its upper position (with the ring in position over the linkage pin), then leave the tractor cab to adjust the pin and lower the parking skid (the ring will position itself automatically). Raise the parking skid and lock it into position. **Remember to put the locking shaft and pin back into place.**

3-3 CONNECTING TO ENERGY SUPPLIES

All connections must imperatively be made with the vehicle stopped, with hydraulic pressure released and the key removed from the ignition.

- Electrical connectors: press the connector into place to supply the lighting system.
- Braking circuit connection:
 - Linkage failure safety brake: operated by a cable connected to a static point on the tractor.
 - Mechanical brake: cable-operated.
 - Hydraulic brake: hydraulic brake fluid with a ball valve.



IMPORTANT

Any trailer with a gross weight in excess of 6 tons is necessarily equipped with a hydraulically assisted braking system, which must be coupled to the tractor's braking system by means of a hydraulic hose.

4. MAINTENANCE

Before proceeding to any maintenance operations, please apply the following safety regulations:



- **Block trailer wheels.**

4-1 WASHING THE FLATBED TRAILER

- Thoroughly wash the trailer body after transporting any dirty or corrosive materials.

4-2 PERIODICAL CONTROLS

- Check the braking system (every six months):
 - State of all connections.
 - Water-tightness of all hoses.
 - Brakes free of any jamming points and/or abnormal wear of brake cylinders, axles etc.
 - Brake lining wear.

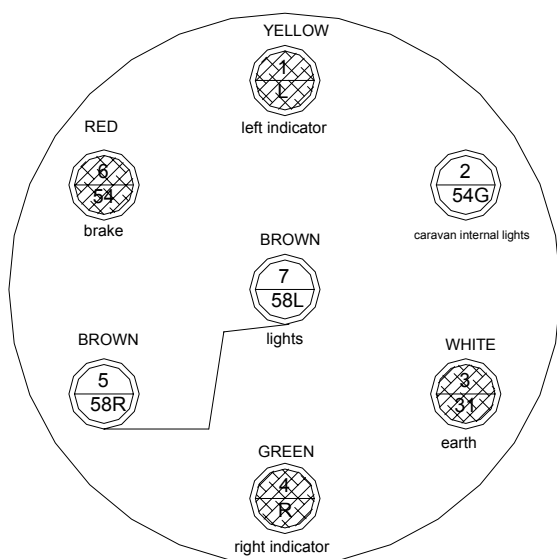
NOTE: *As these are safety elements, all necessary controls and repairs must be carried out by specialists.*

- Check the turntable:
 - Grease daily during periods of intensive use, or before using the flatbed trailer otherwise.
 - Make sure that the turntable is in good condition (i.e. no excessive wear).
- Check parking brake operation and setting: periodically grease the check pawl unit.
- Check the wheel hub bearings: every two years, have the tapered roller bearings' settings checked. Excessive play can cause a deterioration of the bearings' seats and of the braking devices. Have this operation carried out by technically competent staff..
- Lighting checks:

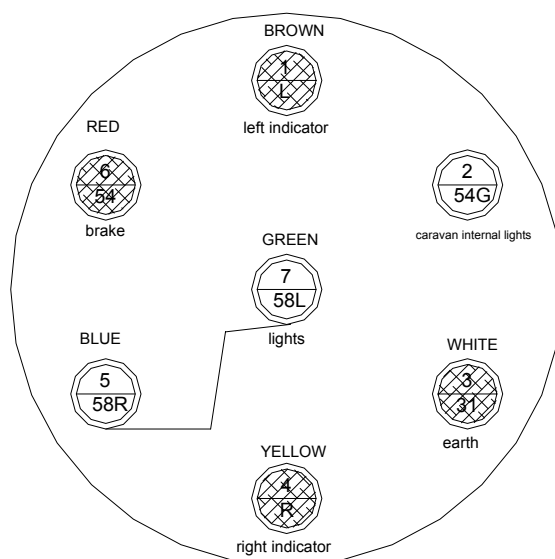


Never take to the road without having checked your lighting systems are operational: On this depend your safety and that of others.

- Make sure that the trailer's electrical connections to your tractor are correct by referring to the diagram below.



STANDARD CONNECTION

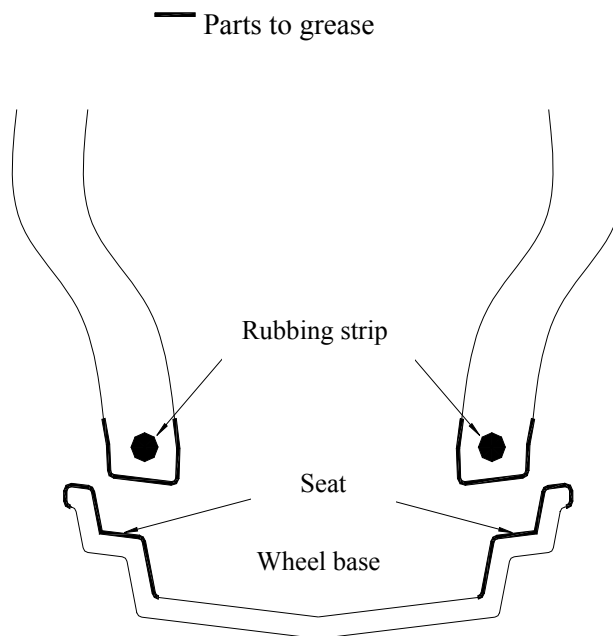


ROLLAND CONNECTION

4-3 WHEELS AND TYRES

➤ Mounting tyres:

- Only mount a tyre on a wheel for which it has been specifically designed.
- Use clean wheels, that are in a good state, and always work on clean ground.
- Use tools suited to the tyres and wheels.
- To facilitate tyre mounting and removal, grease the lining seat and rubbing strip with an appropriate product, as described in the diagram below.
- Always use a new inner tube in a new tube-type tyre, and make sure that the inner tube matches the tyre tread size.



➤ Inflating the tyres:

Correct tyre pressure = grip + extended tyre life + comfort + optimal machine efficiency + care of the soil

(see diagram page p. 11).

- In all cases, when applicable, observe the information on the tyre flank concerning the valve design.
- After mounting a tyre, whether new or used, make sure the tyre is correctly centred on the wheel. If this is not the case, deflate and re-inflate several times if necessary in order to ensure correct centring, whilst being careful not to exceed the maximum pressure necessary to maintain the tyre rubbing strips firmly on the wheel seats, equal to 2.5 bars (35 PSI). Then adjust pressure for use or storage.
- When transporting a machine by road, by rail or by waterways, in order to avoid any deterioration due to some anchoring systems, we recommend that you inflate the tyres to 2.5 bars (35 PSI).
- When starting the machine up, tyre pressure must imperatively be defined and set according to the load carried by the tyres and to the real conditions of use.
- In all cases, we advise against under-inflating the tyres, as this could cause excessive deformation of the tyre carcass and can prematurely make the tyre impossible to use. Over-inflating should also be avoided, as it reduces the contact surface with the ground, leading to loss of grip, and makes the tyre tread more sensitive to shocks.

USERS, REMEMBER TO TIGHTEN YOUR WHEELS



**Warning! The manufacturer will not cover
Any damage due to insufficient tightening.**

R ROLLAND

➤ Tyres specifications:

SIZES	Plies.	Ext. Ø mm	Thickness mm	Max w. bar	Max load per axle, in kg, at 30 kph	Min press. bar
NEW FARMING TYRES						
10.0 / 75 – 15 AGR	10	760	264	5.25	3640	3.75
11.5 / 80 – 15 AGR	12	845	290	5	5150	3.5
12.5 / 80 – 15 AGR	14	889	307	5.75	6200	1
13.5 / 75 – 17 AGR	14	945	345	5.5	7020	3
15 / 70 – 18 AGR	12	990	391	4.5	7000	2.5
16 / 70 – 20 AGR	12	1075	408	4.25	8050	2.5
17 / 80 – 20 AGR	14	1200	426	4.5	10950	2
20 / 70 – 508 AGR	16	1220	508	4.5	12540	2.25
13 / 65 – 18 Dunlop	16	890	336	5	6660	
ROAD TYRES						
D 19.5 XY1 REC		900	297	7	6500	2.75
15 R 22.5 XY1 REC	18	1060	380	5.5	9000	2.25
16.5 R 22.5 XY1 REC	20	1100	430	5.5	10000	2.75
18 R 22.5 XY1 REC	20	1130	455	6.5	12000	3

DECLARATION OF CONFORMITY

Compliant to "C.E" regulation

We,

Company : Rolland S.A.
Address: ZA Des Landes
29800 TREFLEVEZ
FRANCE

Certify that the machine

Make: Rolland
Type:
Serial number:

Complies with technical regulations and meets all procedure regulations applicable to it, as recalled below.

↪ Applicable regulatory provisions:

- Article L. 233.5 of the French labour regulations
- Articles R. 233-1 to R.233-86 of the French labour regulations

↪ United European Standards to which the conception of this machine refers:

- EN 292 parts 1 et 2
- EN 294
- EN 349

↪ French standards or technical specifications to which the conception of this machine refers:

- Pr EN 15-53.

Established in TREFLEVEZ, on

Signatory name and function

Beatrice LE GALL
Chairman and managing director



